

# MANNING, SOUTH CAROLINA

## Market Guide

cityofmanning.org

### City Contact Information



**Scott Tanner**  
City Administrator  
stanner@cityofmanning.org  
29 W. Boyce Street  
Manning, SC 29102  
803.825.9008 cell  
803.435.8477 ext. 5115 office  
cityofmanning.org

### Major Employers & City Information

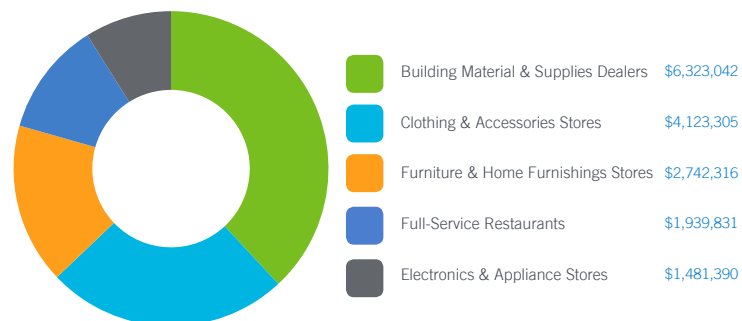
Company Name	Employees
Clarendon County Health Systems	800
Meritor Automotive	146
Trimaco LLC	143
Georgia-Pacific LLC	135
A&K Cypress	85
Bicycle Corporation of America	67
JC Witherspoon	63
Treleoni Group	55

The City of Manning is centrally located in Clarendon County, just off of Interstate 95 at exits 115 or 119 and 122.

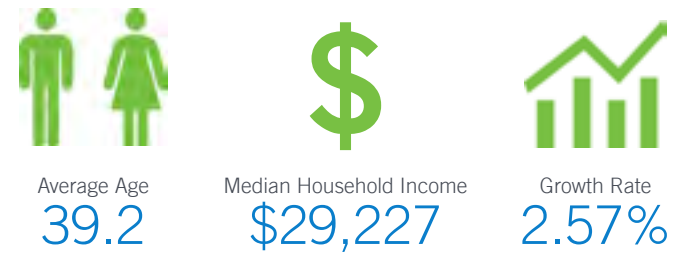
Manning's close proximity to Lake Marion makes it one of the state's favorite recreational areas for all types of water activities. Lake Marion is famous for it's landlocked striped bass and Manning is home for the annual Striped Bass Festival.

### GAP Analysis \$16,609,884 (10 Minute Drive Time)

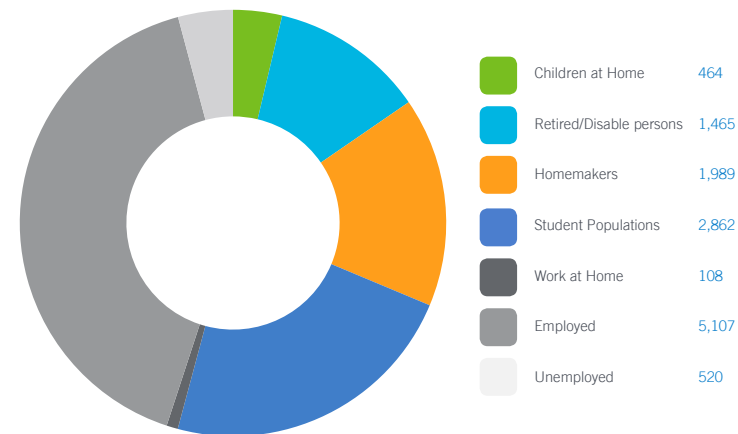
The Gap Analysis is a summary of the primary spending Gaps segmented by retail category. It measures actual consumer expenditures within the City's trade area and compares it to the potential retail revenue generated by retailers in the same area. The difference between the two numbers reflects leakages, or the degree to which consumers travel outside the community for certain retail goods and services. The Gap analysis is a useful tool to gauge retail supply and demand within the community.



### Demographics



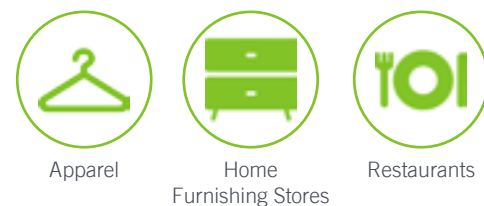
### Daytime Population 12,515 (10 Minute Drive Time)



### Focus Categories

The top categories for focused growth in the municipality are pulled from a combination of leakage reports, peer analysis, retail trends and real estate intuition. Although these are the top categories, Manning's efforts are inclusive beyond the defined list.

Let us know how we can help you find a site!



#### DEMOGRAPHIC PROFILE

2016 Estimated Population  
Daytime Population  
Median HH Income  
Number of Households

#### 3 Mile Radius

6,713  
10,849  
\$27,997  
2,622

#### 5 Mile Radius

10,533  
12,685  
\$29,207  
3,968

#### 10 Mile Radius

20,866  
19,327  
\$31,767  
7,943

#### DEMOGRAPHIC PROFILE

2016 Estimated Population  
Daytime Population  
Median HH Income  
Number of Households

#### 5 Minute Drive Time

5,381  
10,422  
\$27,371  
2,142

#### 10 Minute Drive Time

10,025  
12,515  
\$29,227  
3,774

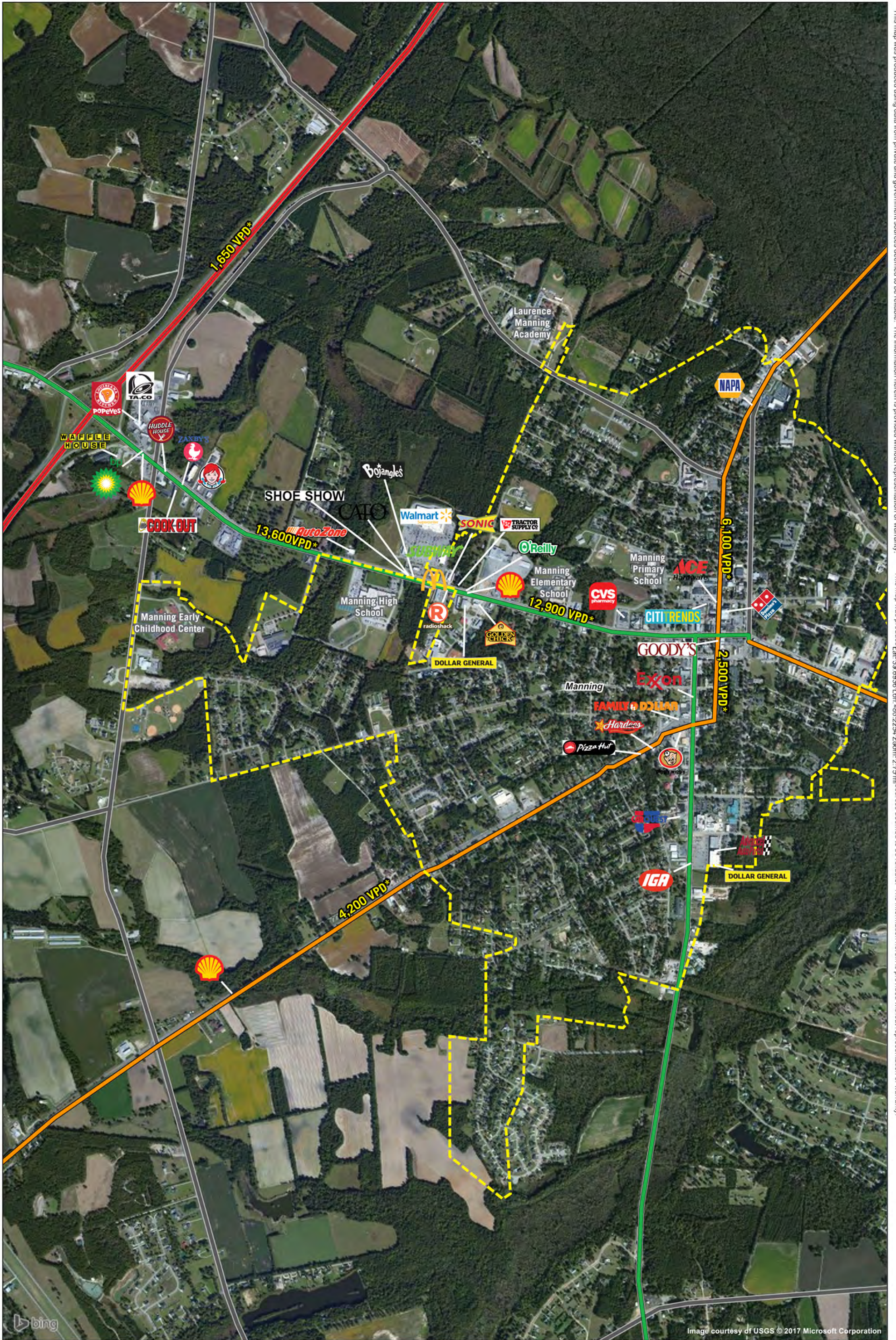
#### 15 Minute Drive Time

15,966  
16,424  
\$31,019  
6,011

\*Source: STI PopStats







This map was produced using data from private and government sources deemed to be reliable. The information herein is provided without representation or warranty. This map was produced using data from private and government sources deemed to be reliable. The information herein is provided without representation or warranty.

# MANNING, SOUTH CAROLINA *Major Retail & Restaurants*



Logos are for identification purposes only and may be trademarks of their respective companies.

©2017, Sites USA Inc., Chandler, AZ (480) 491-1112. All Rights Reserved.